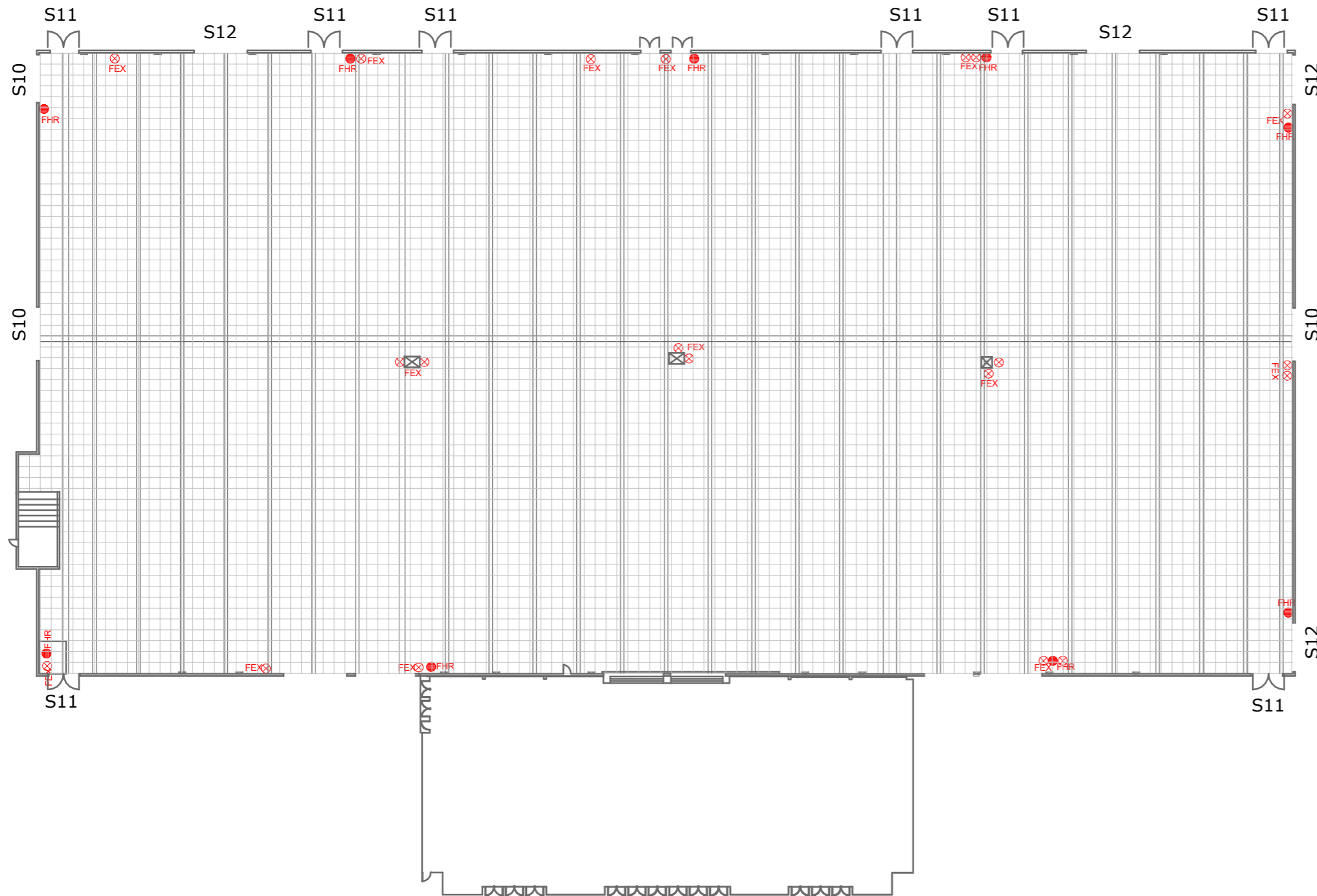


HALL 9



1 STAND LAYOUT
1 : 450

DESCRIPTION:

	HEIGHT:	WIDTH:
S10 - SERVICE ENTRANCE	5,500M	4,800M
S11- SERVICE ENTRANCE	2,030M	2,850M
S12 - SERVICE ENTRANCE	5,500M	5,500M
GROSS AREA: 6 532 M ²		

NOTE:

1. LIGHTING: SODIUM VAPOUR
2. PUBLIC ADDRESS AND CONFERENCE EQUIPMENT AVAILABLE ON REQUEST.
3. CEILING HEIGHT:
AT APEX - 8,2M
UNDERSIDE OF CONCRETE BEAM - 6M
4. CONCRETE COLUMN -Ø- 600MM
5. SERVICE DUCTS INCLUDE:
WATER
ELECTRICITY
TELEPHONE/ FAX
6. FLOOR LOADING: 15 TONNES/M
7. COMPRESSED AIR: AVAILABLE ON REQUEST
8. POWER SUPPLY: 380VOLT 5 WIRE 3 PHASE

LEGEND:

- FIRE HOSEREEL AND 2 FIRE EXTINGUISHERS
- FIRE HOSEREEL AND 1 FIRE EXTINGUISHER
- FIRE HOSEREEL
- FIRE EXTINGUISHER
- DISTRIBUTION BOARD

SCALE:



PLOTTED ON A3: 1:450