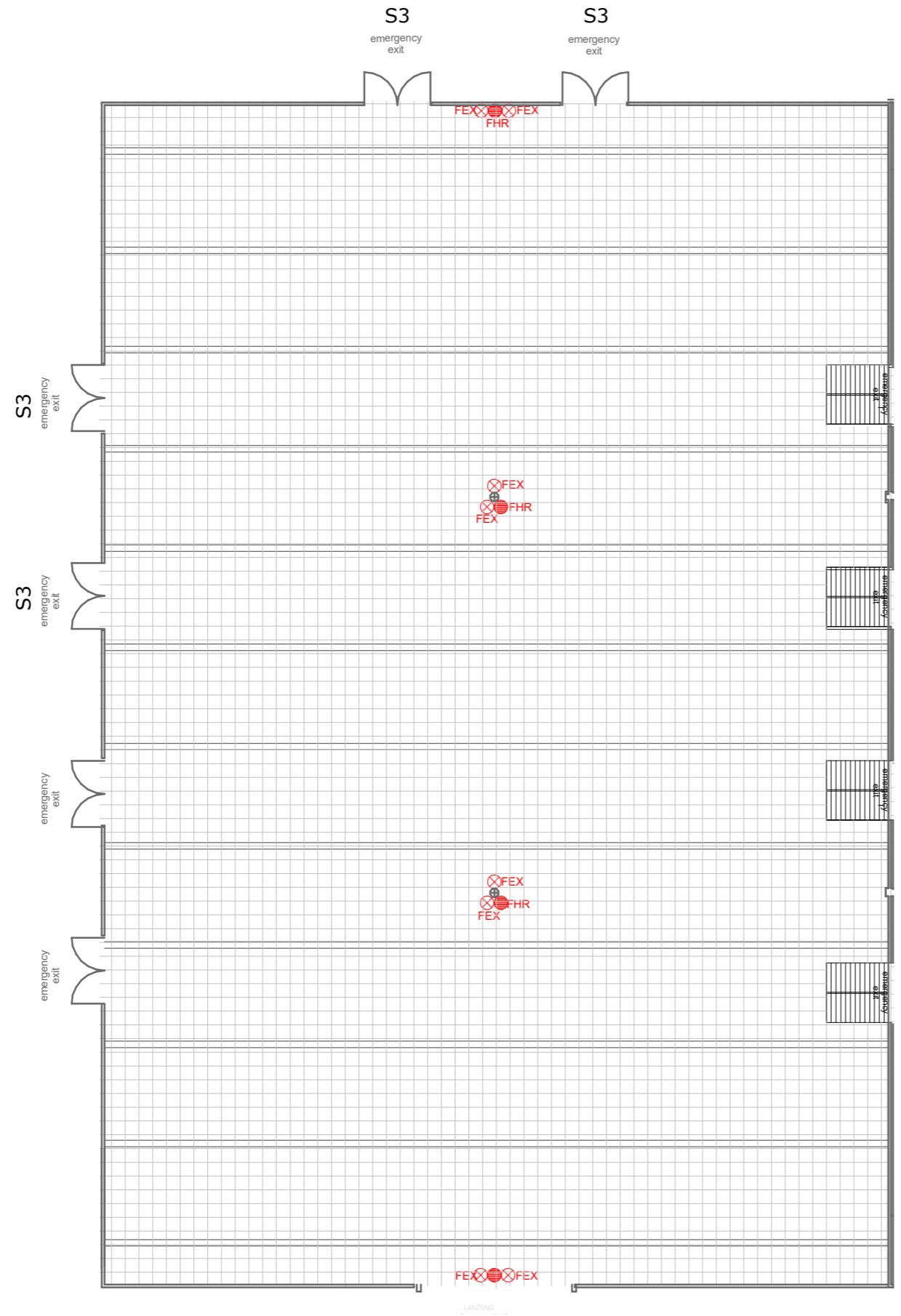


HALL 8



1 STAND LAYOUT
1 : 400



DESCRIPTION:

	HEIGHT:	WIDTH:
S1 - SERVICE ENTRANCE	4,000M	4,800M
S2 - SERVICE ENTRANCE	5,600M	7,200M
S3 - SERVICE ENTRANCE	5,500M	4,800M
S4 - SERVICE ENTRANCE	2,900M	4,800M
GROSS AREA: 4 890 M ²		

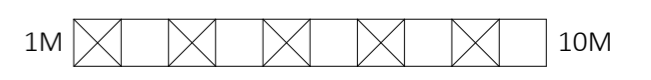
NOTE:

1. LIGHTING: SODIUM VAPOUR
2. PUBLIC ADDRESS AND CONFERENCE EQUIPMENT AVAILABLE ON REQUEST.
3. CEILING HEIGHT:
AT APEX - 8,2M
UNDERSIDE OF CONCRETE BEAM - 6M
4. CONCRETE COLUMN -Ø- 600MM
5. SERVICE DUCTS INCLUDE:
WATER
ELECTRICITY
TELEPHONE/ FAX
6. FLOOR LOADING: 15 TONNES/M
7. COMPRESSED AIR: AVAILABLE ON REQUEST
8. POWER SUPPLY: 380VOLT 5 WIRE 3 PHASE

LEGEND:

- ⊗ FIRE HOSEREEL AND 2 FIRE EXTINGUISHERS
- ⊕ FIRE HOSEREEL AND 1 FIRE EXTINGUISHER
- FIRE HOSEREEL
- ◇ FIRE EXTINGUISHER

SCALE:



PLOTTED ON A3: 1:400

DISCLAIMER: CARE HAS BEEN TAKEN TO ENSURE THAT MEASUREMENTS ON THIS FLOORPLAN ARE CORRECT. HOWEVER, IT IS THE CLIENTS RESPONSIBILITY TO VERIFY THE CORRECTNESS OF THE MEASUREMENTS AND INFORMATION.