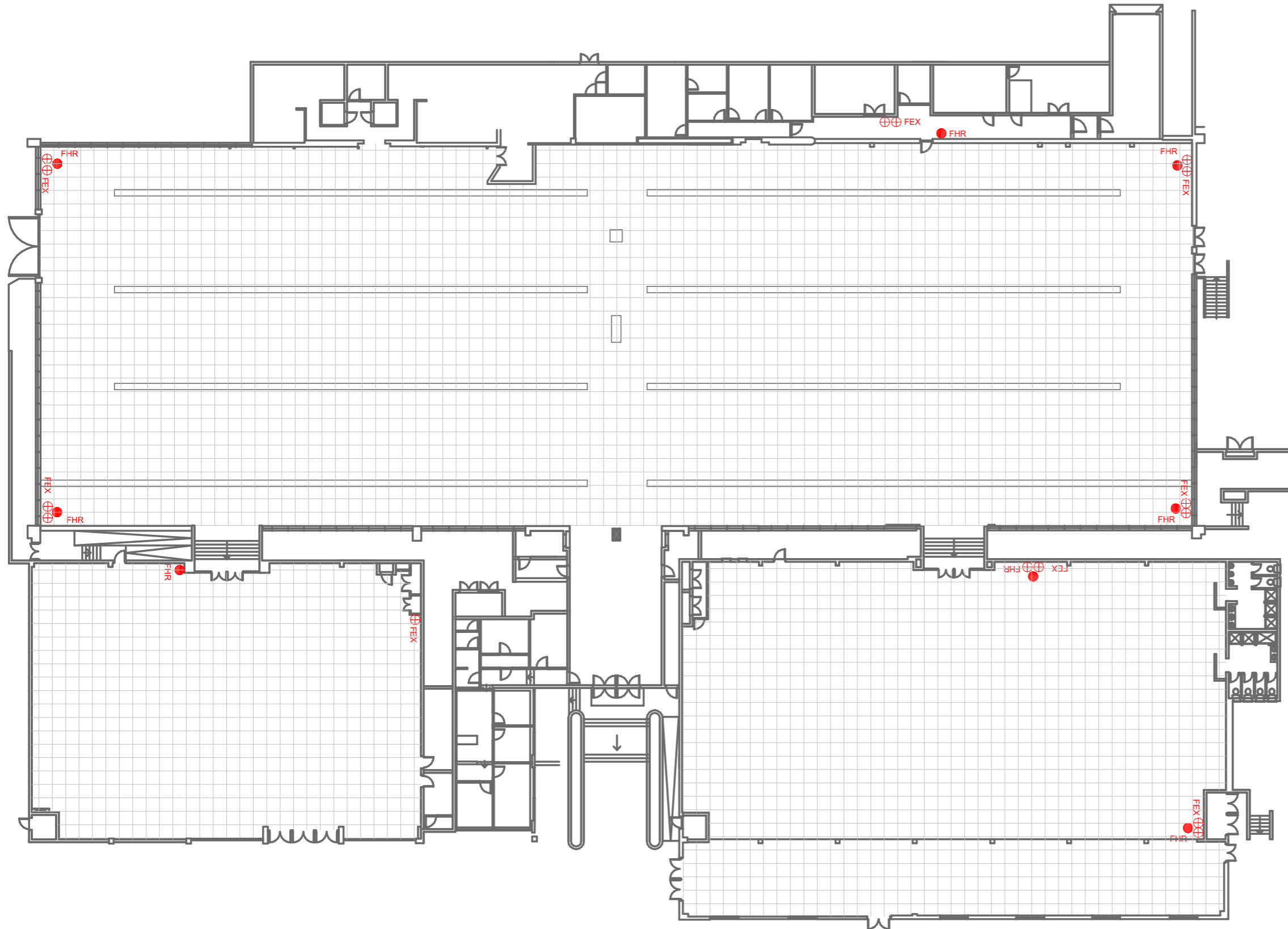


# HALL 10, 10A, 10B



### DESCRIPTION:

DOOR HEIGHT RESTRICTIONS	
- SERVICE DOORS	1 OFF 2M HIGH - 4.5M
- ROLLER SHUTTER DOORS	2 OFF 2M HIGH - 1.5M
GROSS AREA: 3 962 M <sup>2</sup>	

### NOTE:

1. LIGHTING: SODIUM VAPOUR
2. PUBLIC ADDRESS: AVAILABLE ON REQUEST.
3. CEILING HEIGHT:
  - AT APEX - 8,2M
  - UNDERSIDE OF CONCRETE BEAM - 6M
4. CONCRETE COLUMN -Ø- 600MM
5. SERVICE DUCTS INCLUDE:
  - WATER
  - ELECTRICITY
  - TELEPHONE/ FAX
6. FLOOR LOADING: 7.5 TONNES/M
  - OVER DUCTS 3,5 TON/MSQ
7. COMPRESSED AIR: AVAILABLE ON REQUEST
8. POWER SUPPLY: 380VOLT 5 WIRE 3 PHASE

### LEGEND:

- FIRE HOSE REEL AND 2 FIRE EXTINGUISHERS
- FIRE HOSE REEL AND 1 FIRE EXTINGUISHER
- FIRE HOSE REEL
- FIRE EXTINGUISHER
- DISTRIBUTION BOARD

### SCALE:



1 STAND LAYOUT  
1 : 320

PLOTTED ON A3: 1:320